

REGULATORY OBLIGATIONS

- ⌚ Lightning Risk Analysis
- ⌚ Lightning Technical Study
- ⌚ Installation
- ⌚ Complete and Visual Lightning Checks by a certified body

Risk installations subject to one or more of the ICPE, INB and INBS decrees are subject to studies and implementation of lightning protection. The IGH and certain public buildings such as churches, theatres, etc. may also be concerned.

With a long experience in the field of lightning and on sites ranging from petrochemical to nuclear (CEA, AREVA, EDF) and military sites, Ekium is certified according to the QUALIFOUDRE standard and is capable of supporting you on numerous missions.

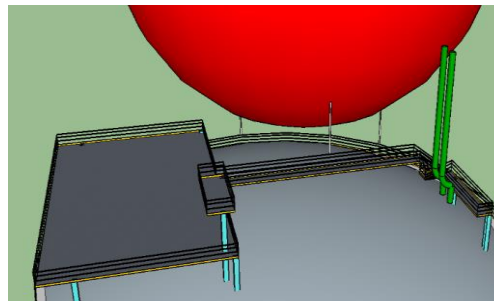


Lightning 2/2

DELIVRABLES

- › Lightning Risk Analysis
- › Lightning Technical Study
- › Full and Visual Lightning Checks
- › Updates to the lightning files
- › Campaign of earthing and equipotentiality measurements
- › Miscellaneous technical assistance: Expertise, aMOE in the design and/or construction phase, ...
- › Lightning training (trainer recognised by INERIS) - According to the standards NF EN 62 305-1 à 4 et NF C 17-102.

Our approach consists of defining the most relevant mode of protection from a technical and economic point of view, in particular according to the existing or possible technical solutions at a lower cost.



3D modelling of the protection, use of the fictitious sphere method.

